

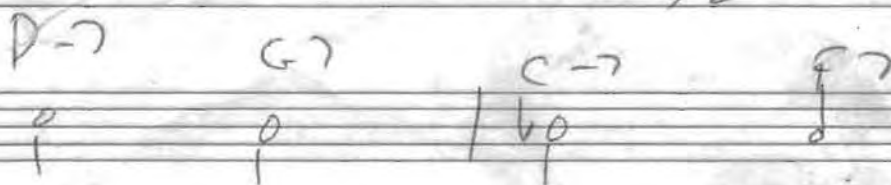
W

GUIDE TONES

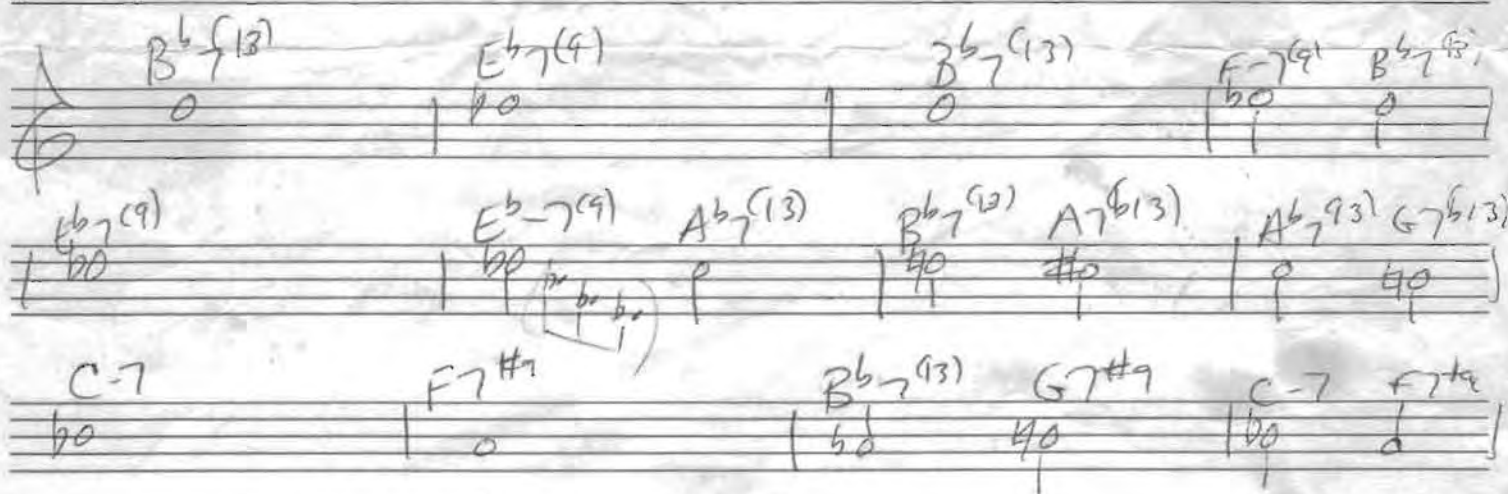
① Most important notes of the chords.

the 3rd & the 7th.

② Guide t. Line. Smoothest possible moving line bet. chords $\frac{1}{2}$ or whole step.



B^b blues



MAKE A B^b blues Rhythm tape

① PLAY the G. T. LINE in OCTAVES.

② Solo, playing the G.T. on every 1st beat.
Except when 2 chords (1st & 3rd beat)

OLEO

327.

- SALLY POWERS

A Bbmaj7 B^b7 C-7 F7 Bbmaj7 G7 C-7 F7

F-7 Bb7 Ebmaj9 Eb-9 (A^b 7/13) Bbmaj7 G7 1. C-7 F7

2. Bbmaj7 **B** A-jm D7 D-jm G7

G-jm C-jm G^b-jm

Bbmaj7 G7 C-7 F7 Bbmaj7 G7 C-7 F7

F-7 Bb7 Ebmaj9 Eb-6 Bbmaj7 G7 Bbmaj7

JOHN COLTRANE - "TRANE TRACKS"
MILES DAVIS - "DAVIS"

(AABA)